

## Installation Instructions

**S-5!® Warning!** Please use these products responsibly! Visit our website or contact your S-5! distributor for available load test results. The user and/or installer of these parts is responsible for all necessary engineering and design to ensure the S-5-K Grip Snow has been properly spaced and configured.

**Notice to S-5! product users:** Due to the many variables involved with specific panel products, climates, snow melt phenomena, and job particulars, the manufacturer cannot and does not express any opinions as to the suitability of any S-5! assembly for any specific application and assumes no liability with respect thereto. S-5! products are tested for ultimate holding strength on various profile types and materials. This information is available from the S-5! website: [www.S-5.com](http://www.S-5.com). This document is an installation guide only and the photographs and drawings herein are for the purpose of illustrating installation tools and techniques, not system designs.

**The S-5-K Grip Snow clamp is designed to fit Klip Rib® and other bulb snap-together seams. This product is designed and tested to work with ColorGard® and X-Gard™ snow retention systems.**

The S-5-K Grip Snow utilizes multiple inserts (sold separately) in order to accommodate a variety of bulb snap-together profiles. Each insert has a unique shape that allows for a tight fit and provides increased holding strength over other attachment options.

The appropriate seam profiles for each insert option are listed on the back of these installation instructions.

The heads of the clamp's M8-1.25 X 13 mm Hex Flange Bolts control the amount of compression, which reduces the possibility of over-compressing the seam, and makes installation a snap!

## Tools Needed

- Dial-Calibrated Torque Wrench\*  
(\*For accurate tension values, do NOT use a clicking torque wrench)

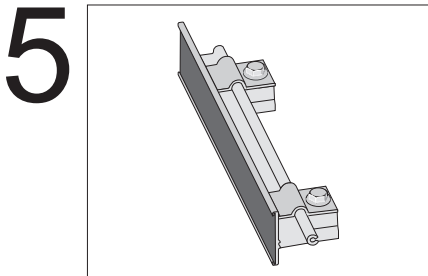
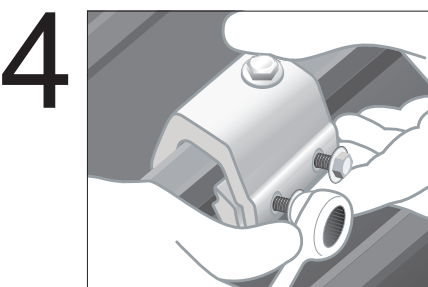
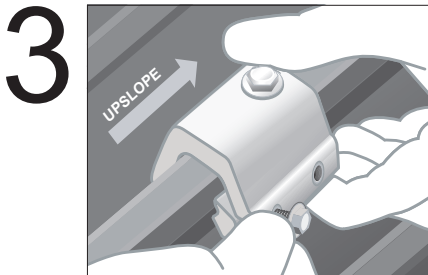
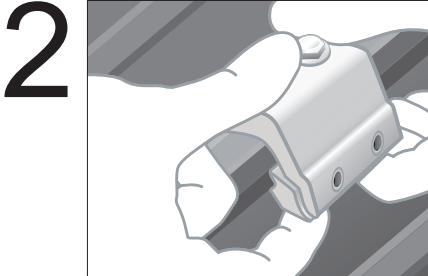
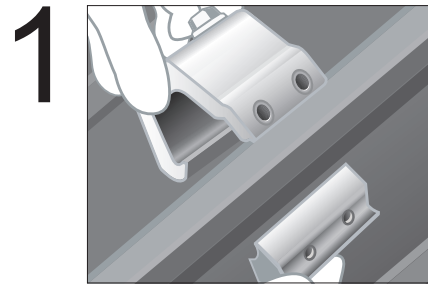
## To Install S-5-K Grip Snow

**For use with ColorGard:** If the ColorGard assembly utilizes the VersaClip™ for attachment of the ColorGard crossmember to the clamps, the bolt hole in the clamp should be at the upslope end of the clamp. If the assembly uses punched ColorGard without VersaClip, the hole should be at the downslope end of the clamp.

**For use with X-Gard:** The bolt hole in the clamp should always be at the upslope end of the clamp.

1. Position clamp insert at desired location along the rib, just under the fold of the rib. Clamp placement MUST be located within 2" upslope of concealed clip (not directly over clip locations).
2. Roll the clamp into position over the seam and clamp insert piece. Position the clamp so that it is centered over the clamp insert with approximately 2 mm of insert overhang on each side of the clamp.
3. Partially thread the two bolts into the base of the S-5-K Grip Snow by hand. The bolts should engage the divots in each end of the S-5-K Grip Snow insert.
4. Tighten the bolts at the base of the S-5-K Grip Snow using a ratchet or screw gun with a 13 mm hex. For optimal holding strength, bolts should be tensioned to 20 inch pounds.
5. Secure S-5! ColorGard snow retention system to clamps according to ColorGard installation instructions.

These instructions are for use by those experienced in the trade. Always follow appropriate safety precautions and use appropriate tools.



### Seam Profiles

**S-5-K Grip Snow is designed to fit Klip-Rib® and other bulb snap-together seams.**

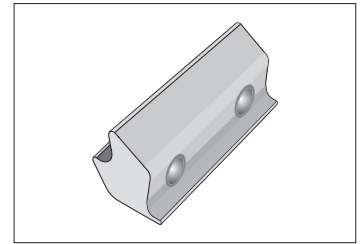
**Seam profiles for the S-5-GX 10 insert:**

- LYSAGHT KLIP-LOK® 406
- McElroy Metal Mirage
- AEP Span Klip-Rib®
- Metal Sales Clip-Loc
- SpeedDeck® SpeedDeck®
- Safintra Saflok 410
- Safintra Saflok 700
- Domico GBS Domitec® Dach
- And other similar profiles

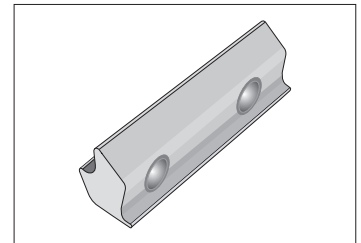
**Seam profiles for the S-5-GX 50 insert:**

- LYSAGHT KLIP-LOK Classic® 700
- LYSAGHT KLIP-LOK 700 Hi-Strength®
- Stramit Speed Deck Ultra®
- Fielders KingKlip® 700
- And other similar profiles

If you have a profile not listed here, please contact S-5!® to request a sample for testing.



**S-5-GX 10 Insert**



**S-5-GX 50 Insert**

#### **S-5!® Warning! Please use this product responsibly!**

S-5!® Warning! Please use this product responsibly! Products are protected by multiple U.S. and foreign patents. For published data regarding holding strength, fastener torque, patents, and trademarks, visit the S-5! website at [www.S-5.com](http://www.S-5.com).

Copyright 2014, Metal Roof Innovations, Ltd. S-5! products are patent protected.

S-5! aggressively protects its patents, trademarks, and copyrights. Version 102714.